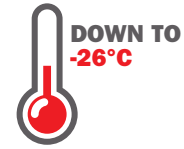


HEAT PUMP SYSTEMS

J-IV SERIES
mini VRF high performance



FUJITSU
AIRSTAGE



Eligible for
grant up to
\$5,000

Canada
**Greener
Homes**
Grant



*Applies when properly registered
AND installed by a Fujitsu
Elite Contractor in a residence.

HIGH-EFFICIENCY VRF SYSTEMS

VRF technology: efficiency and flexibility

VRF (Variable Refrigerant Flow) technology is one of the most efficient technologies in terms of energy savings, ease of installation, durability and above all, energy efficiency.



Inverter technology permits continuous modulation of the compressor speed and unit capacity to match the load helping to maintain a steady and consistent temperature throughout the conditioned spaces. Modulation reduces the number of start stop cycles and substantially improves comfort, energy consumption and unit longevity.



Superior energy efficiency even at -26°C

VRF systems provide 93%** nominal capacity at temperatures as low as -26°C, well above the industry average which doesn't exceed 40% at -15°C. This translates into a comforting warmth when you really need it and a significant reduction of electricity consumption. In addition, the Fujitsu VRF system is ENERGY STAR qualified, which means that it meets strict technical specifications in terms of energy efficiency and has undergone many tests to obtain this certification.



* Some combinations
** For AOU36RLAVM J-IV unit

- ✓ ENERGY EFFICIENCY
- ✓ FLEXIBLE AND EASY INSTALLATION
- ✓ OPTIMUM COMFORT

ADVANCED HIGH-EFFICI

Energy savings

J-IV VRF systems achieve a coefficient of performance (COP) up to 3.88. The COP is a comparative value determined by dividing the energy output by the energy consumption. The higher the COP the more efficient the system.

Example: A system with a COP of 2.0 uses half as much energy to produce the same energy output as a system with a COP of 1.0.

AIRSTAGE

AOU36RLAVS4 AOU48RLAVS4

MULTI-POSITION AIR HANDLER ARUX-TLAV2

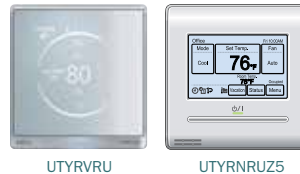
Features

- Quiet 3-speed fan
- Up flow, horizontal right and left installations
- Easy conversion to horizontal right
- Adjustable static pressure from 0.1 to 0.8 in.WG
- Easy access front panel
- Optional filter base available
- Filter size 16 × 20 × 1
- Auxiliary heat operation capability
- 10 year extended warranty on parts and compressor. See warranty statement.
- 12 to 60,000 BTU/h

Option of installing any thermostat with the UTYTTRX conversion kit.



Wired Remote Controllers



Airstage Series			J-IVS	
Model			AOU36RLAVS4	AOU48RLAVS4
Nominal capacity		Ton	3	4
Indoor unit connectable capacity ratio			50% to 130%	
Maximum connectable indoor units			1-9	1-12
Power source		V / Ø / Hz	208 / 230 VAC, 1 phase, 60Hz	
Cooling capacity (non-ducted/ducted)	Capacity	BTU/h	36,000	48,000
	EER2	BTU/h/W	11.8 / 10.25	9.6 / 8.4
	SEER2	BTU/h/W	20.5 / 15.5	20.4 / 14.7
Heating capacity (non-ducted/ducted)	Capacity	BTU/h	42 000	54 000
	COP2 (Non Ducted/Ducted)	W/W	3.74 / 2.8	3.54 / 3.08
	HSPF2 (Non Ducted/Ducted)	-	9.7 / 7.9	9.4 / 8.2
Airflow rate	Cooling *Heating (J-IV only)	CFM (m³/h)	2,472 (4,200)	2,590 (4,400)
Sound pressure level	Cooling/heating	dB (A)	52 / 54	53 / 55
Dimensions	H x W x D	in (mm)	39 5/16 x 38 3/16 x 14 9/16 (998 x 970 x 370)	
Weight		lbs (kg)	190 (86)	
Connection pipe diameter	Liquid	in (mm)	3/8 (9.52)	
	Gas	in (mm)	5/8 (15.88)	
Max. total pipe length		ft (m)	262 (80)	
Max. actual pipe length (OU to furthest IU)			164 (50)	
Max. height difference (OD & ID) (upper/lower)		ft (m)	98/98 (30/30)	
Operation range	Cooling	°C	-5 to 46	
	Heating	°C	-26 to 21	
Eligible for Greener Home Grant**			YES	NO

Note : Specifications are based on the following conditions:
 Cooling : Indoor temperature of 26.7°C DB / 19.4°C WB, and outdoor temperature of 35°C DB / 23.9°C WB.
 Heating : Indoor temperature of 21.1°C DB / 15.6°C WB, and outdoor temperature of 8.3°C DB / 6.1°C WB.
 Pipe length : 25ft (7.5m), height difference : 0 ft (0 m). (outdoor unit - indoor unit)

CIENCY TECHNOLOGY



*Some combinations

Wired Remote Controllers



UTYRVRU

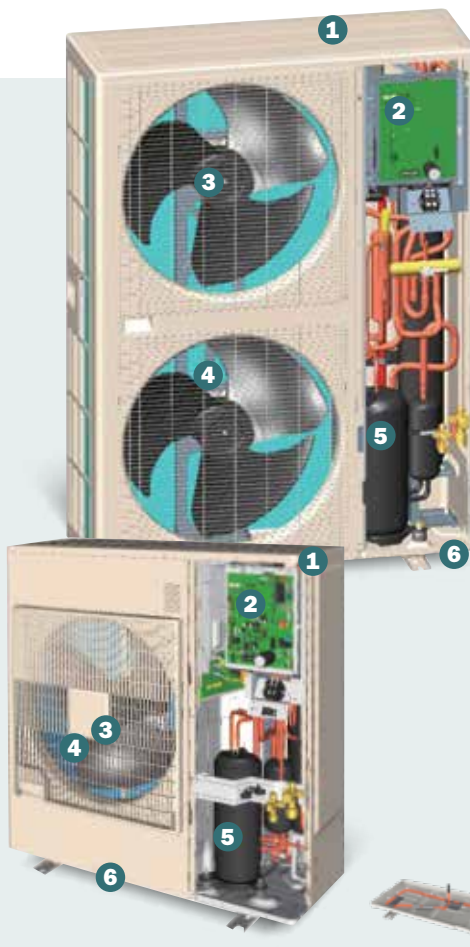


UTYRNRUZ5

AIRSTAGE

AOU36RLAVM4
AOU48RLAVM4
AOU60RLAVM4

J-IV		
AOU36RLAVM4	AOU48RLAVM4	AOU60RLAVM4
3	4	5
50% to 150%		
1-9	1-12	1-15
208 / 230 VAC, 1 phase, 60Hz		
36,000	48,000	60,000
13.3 / 10.6	12.5 / 9.6	10.8 / 9.1
19.2 / 15.5	20.4 / 15.6	19.5 / 14.7
42,000	54,000	66,000
3.82 / 2.82	3.88 / 3.60	3.64 / 3.3
10.0 / 8.2	9.6 / 8.5	9.4 / 8.6
3,649 (6,200) *3,649 (6,200)	3,767 (6,400) *3,767 (6,400)	4,827 (8,200) *4,002 (6,800)
50 / 52	51 / 52	57 / 57
52 1/2 x 38 3/16 x 14 9/16 (1 334 x 970 x 370)		
262 (119)	265 (120)	271 (123)
3/8 (9.52)		
5/8 (15.88)	5/8 (15.88)	3/4 (19.05)
590 (180)		
394 (120)		
164 / 131 (50/40)		
-5 to 46		
-26 to 21		
YES	YES	YES



1 LARGE HEAT EXCHANGER

Heat exchange performance is substantially improved by adding a 3rd row to the heat exchanger and a pre-coated fin material for added corrosion protection.



2 DC INVERTER CONTROL

Efficiency is improved by mounting of a new active filter module.



3 HIGH-EFFICIENCY DC FAN MOTOR

Using low noise dual DC fan motors offers better control and efficiency.



4 LARGE PROPELLER FAN

High performance and low noise realized by large propeller and optimization of angle.



5 HIGH-EFFICIENCY DC TWIN ROTARY COMPRESSOR

DC twin rotary compressor provides great performance under all load conditions. Its performance is optimized for part-load operation.

6 BASE PAN HEATER

Specifically designed for better drain management and performances down to -26°C.



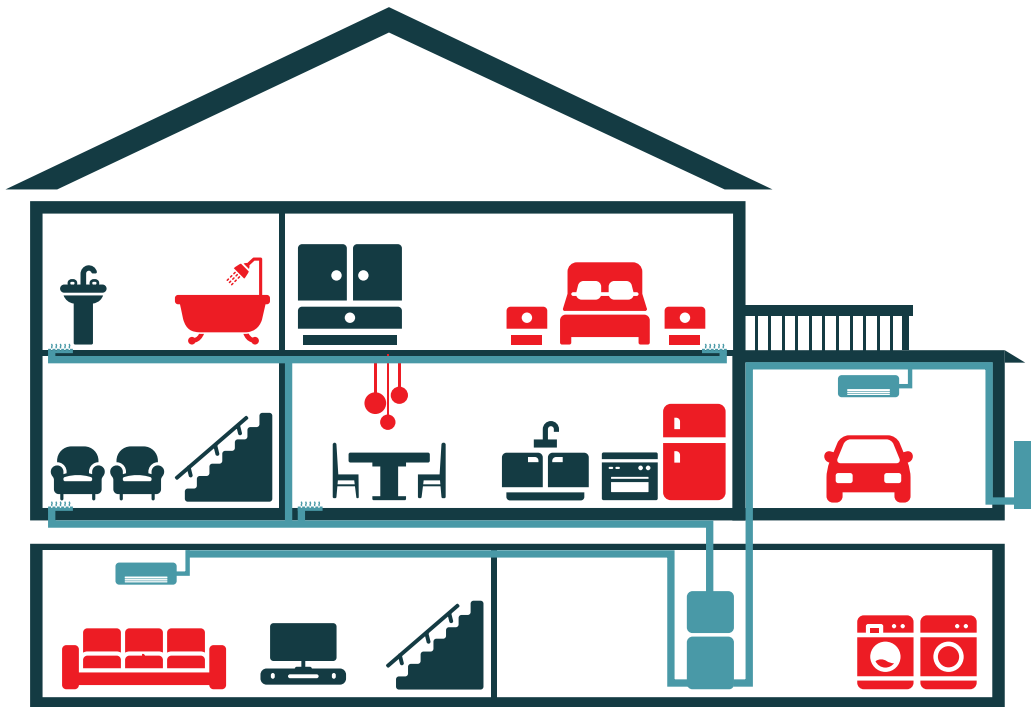
A VRF SYSTEM FOR EVERY HOME

The versatility of Fujitsu Variable Refrigerant Flow (VRF) systems provide homeowners with unprecedented options when it comes to selecting the quantity and types of units installed.

Easy installation

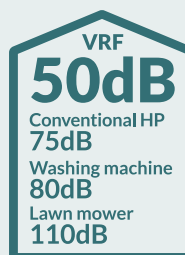
One of the great advantages of VRF technology is its ease of design and installation. Adapting very easily to the existing system, its installation requires only minor work.

- 1 It can replace a central system by adapting to the existing ducting system.
- 2 It can also consist only of ductless units, making it an ideal system for homes without ventilation ducts.
- 3 It can be considered when building a new house, knowing that it will be possible to eventually add indoor units as additional heating sources to cope with comfort problems in areas such as the garage or basement.



Discreet and quiet

The zero-clearance footprint of the outdoor unit is ideal for tight terrains and its noise level, lower than a standard heat pump, meets the increasingly strict regulations of municipalities in terms of decibels.



	Cooling	Heating
3 ton	50dB(A)	52dB(A)
4 ton	51dB(A)	53dB(A)
5 ton	57dB(A)	57dB(A)

Guaranteed comfort

Fujitsu heat pumps are designed to last and deliver unmatched performance year after year. This is why Fujitsu equipment is backed by one of the best warranties in the industry. Furthermore, your Fujitsu certified dealer is supported by The Master Group, the largest independent HVAC-R distributor in Canada. For 70 years, The Master Group has distinguished itself for its extensive inventory, exceptional customer service, and technical expertise.

OTHER INDOOR COMBINATION OPTIONS

Up to 15 indoor units from a single outdoor unit: wall mounted, built-in, cassette and floor mounted
J-IVS: max 12 units and J-IV: max 15 units



Trust Fujitsu certified installers

Entrusting your comfort to Fujitsu, is ensuring cozy comfort all year, maximum performance when you really need it and substantial energy savings.

It is also assurance of a flawless installation guaranteeing optimal system performance because each Fujitsu system is installed by a licensed dealer who has received a specific technical training and has all the skills required to recommend the unit best suited to your needs and comfort standards. His recommendation will be based not only on the living space, but also on insulation, windows, number of occupants and your lifestyle and habits.



Authorized dealer

AIRSTAGE

The Fujitsu logo is a registered trademark of Fujitsu Limited. AIRSTAGE logo and name is a trademark of Fujitsu General America, Inc. Other company and product names mentioned herein may be registered trademarks, trademarks or trade names of their respective owners. Specifications and design are subject to change without notice for future improvement. Actual products colors may be different from the colors shown in this printed material.



- Standard residential application warranty is 5-years on parts & 7-years on compressor. May be extended to 10-years parts & compressor if registered on the Fujitsu portal within 60 days of the installation date.
- 12-years parts & compressor warranty for Elite and Elite Plus contractors if registered on the Fujitsu portal within 60 days of the installation date.
- 5 & 10-year labour warranty plans available for purchase separately from third party (12-years for Elite dealers), ask your dealer for more details.

