


# Wall Mounted Ductless **HEAT PUMPS**

LM SERIES  
9 & 12,000 BTU/h

  
**FUJITSU**



ne  
ep



**5** YEAR  
LIMITED  
WARRANTY  
ON PARTS

**7** YEAR  
LIMITED  
WARRANTY  
COMPRESSOR



# WALL MOUNTED HEAT PUMPS

## ADVANCED DUCTLESS TECHNOLOGY FOR CONSISTENT AND PERFECT COMFORT IN WINTER AND SUMMER

Fujitsu offers innovative units from the latest technology  
to provide you with year-round optimal comfort.

### **Our goal: to make the world a more comfortable place**

A long tradition of innovation and technological breakthroughs is at the heart of the company's philosophy. The insight and experience Fujitsu engineers gained over many years in developing products to improve consumer living has guided the development of the most efficient residential and commercial comfort systems using the most advanced technologies in the world.

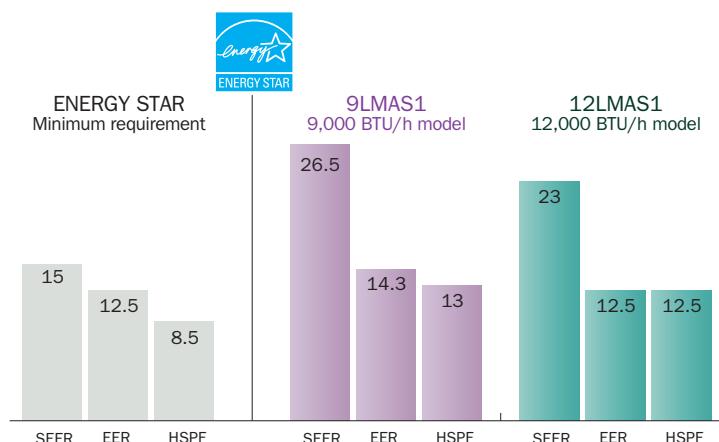


### **There's reliability, then there's Fujitsu reliability**

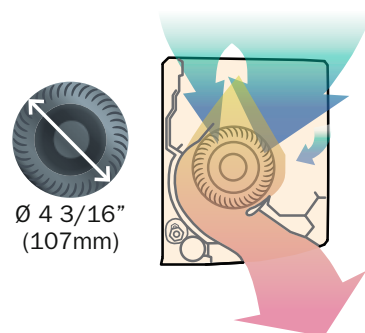
Fujitsu systems are remarkably reliable: more than 99.99% have never had to be replaced or removed from where they've been installed during the life expectancy of the unit. This exceptionally high rate of reliability stems from Fujitsu's unrivaled quality control processes. This commitment to quality combines 40 years of HVAC experience with state-of-the-art testing technology. This rigorous testing leads to heating and cooling systems that function both reliably and effectively even in extreme temperatures or other inclement conditions.

## High efficiency

High efficiency, ENERGY STAR rated systems with state-of-the-art coil design and increased fan performance.



## Optimal ventilation



Large cross-flow fan – New and improved fan design that delivers high performance with lower energy consumption, ultra-quiet operation, down to 19 dB, as low as a whisper, for a better temperature stability all around the house with a high CFM of 453.

## Smart device control (optional)

Wi-Fi compatible systems such as the LMA5 series can be controlled from anywhere using the FGLair app on a mobile device, or smart home devices such as Amazon Echo or Google Home.

UTYTFSXF1



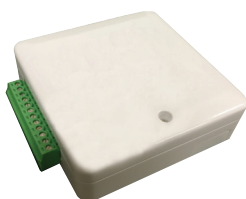
(FGLair app is available for download on the Apple App store and Google Play Store.)



## Third party thermostat converter (optional)

Control your Fujitsu heating and cooling system with your favourite smart thermostat (not included).

UTYTTRX





## Optional accessories

<b>Wired Remote Controller</b> UTYRNRU4	<b>Simple Remote Controller</b> UTYRSRY, UTYRHRY	<b>Thermostat Converter</b> UTYTTRX	<b>Wireless LAN Interface</b> UTYTFSXF1
<b>External Input and Output PCB</b> UTYXCSXZ1	<b>External Connect Kit</b> UTYXWZXZ5	<b>Communication Kit</b> UTYTWRXZ2	

## Guaranteed comfort

Fujitsu heat pumps are designed to last and deliver unmatched performance year after year... This is why Fujitsu offers a complete warranty on parts, labor and compressor. Furthermore, your Fujitsu certified dealer is supported by The Master Group, the largest independent HVAC-R distributor in Canada. For nearly 70 years, The Master Group has distinguished itself for its extensive inventory, exceptional customer service, and technical expertise. An additional insurance for peace of mind for many years.

Model	Indoor Unit			ASUG09LMAS 		ASUG12LMAS 			
	Outdoor Unit			AOUG09LMAS1		AOUG12LMAS1			
Power Source				V / Ø/ Hz		208/230 V / 1Ø / 60Hz			
Capacity	Cooling		BTU/h (Min. - Max.)	9,000 (3,400 - 10,900)		12,000 (3,400 - 13,300)			
	Heating			12,000 (2,800 - 15,000)		16,000 (2,800 - 19,100)			
	Max. Heating at -8°C (17°F)		BTU/h	9,500		11,200			
	Max. Heating at -15°C (5°F)			8,500		10,000			
Input Power	Cooling / Heating			kW		0.63 / 0.84		0.96 / 1.28	
EER	Cooling			BTU/hW		14.3		12.5	
COP	Heating			kW/kW		4.19		3.66	
SEER	Cooling					26.5		23	
HSPF (region 4)	Heating					13.0		12.5	
Running Current	Cooling / Heating			A	3.1 / 4.0		4.7 / 6.0		
Max. Operating Current	Cooling / Heating				6.4 / 7.9		6.9 / 9.4		
Max. Circuit Breaker					15		15		
Airflow Rate	Indoor (Cooling)	Hi / Me / Lo / Quiet		CFM (m³/h)	453 / 353 / 264 / 147 (770 / 600 / 450/250)		453 / 353 / 264 / 147 (770 / 600 / 450 / 250)		
	Indoor (Heating)				453 / 376 / 306 / 182 (770 / 640 / 520 / 310)		453 / 376 / 306 / 182 (770 / 640 / 520 / 310)		
	Outdoor				912 / 912 (1,550 / 1,550)		1,065 / 1,065 (1,810 / 1,810)		
Sound Pressure	Indoor	Cooling	Hi / Me / Lo / Quiet	dB(A)	43 / 36 / 30 / 19		43 / 36 / 30 / 19		
		Heating			43 / 38 / 33 / 21		43 / 38 / 33 / 21		
	Outdoor (Cooling /Heating)				46 / 48		49 / 51		
Net Dimensions (H x W x D)	Indoor			in. (mm)	10 5/8 x 32 13/16 x 8 3/4 (270 x 834 x 222)				
	Outdoor				21 5/16 x 31 7/16 x 11 7/16 (542 x 799 x 290)				
Net Weight	Indoor			lbs (kg)	22 (10)				
	Outdoor				68 (31)		71 (32)		
Connection Method					Flare				
Piping Connection	Liquid - Gas			in. (mm)		1/4 - 3/8 (6.35 - 9.52)		1/4 - 3/8 (6.35 - 9.52)	
Max. Pipe Length - Pre-Charge				ft. (m)		66 (20) - 49 (15)			
Max. Height Difference				ft. (m)		49 (15)			
Moisture Removal				pints/h (L/h)		2.7 (1.3)		3.8 (1.8)	
Operation Range	Outdoor	Cooling		C° (°F)	-10~46 (14-115)				
		Heating			-15~24 (5-75)				
Refrigerant					R410A				

**5** YEAR  
LIMITED WARRANTY ON PARTS

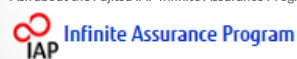
**7** YEAR  
LIMITED WARRANTY ON COMPRESSOR

**10** YEAR  
LIMITED WARRANTY ON PARTS

Every Fujitsu residential system is backed with a 5-year parts and 7-year compressor warranty.

For extra peace of mind, register your qualifying product on-line at [contractors.fujitsugeneral.com/registration/dsp\\_step\\_one.cfm](http://contractors.fujitsugeneral.com/registration/dsp_step_one.cfm) within 60 days of installation to benefit our extended protection offering up to 10-year parts coverage on residential applications. Otherwise, the warranty reverts to the manufacturer's standard 5-year parts and 7-year compressor warranty.

Ask about the Fujitsu IAP Infinite Assurance Program for additional labor warranty.



Authorized dealer



Proper sizing and installation of equipment is critical to achieve optimal performance. Split system air conditioners and heat pumps must be matched with appropriate coil components to meet ENERGY STAR criteria. Ask your contractor for details or visit [www.energystar.gov](http://www.energystar.gov).

The Fujitsu logo is a registered trademark of Fujitsu Limited. *Haicyon* is a worldwide trademark of FUJITSU GENERAL LIMITED and is a registered trademark of Japan, the USA, and other countries or areas. FGLair is a worldwide trademark of FUJITSU GENERAL LIMITED. Other company and product names mentioned herein may be registered trademarks, trademarks or trade names of their respective owners. Specifications and design are subject to change without notice for future improvement. Actual products colors may be different from the colors shown in this printed material.



MASTER\_LM\_GTAES0820

