

# Master

# 2020

## Moovair Wi-Fi



Product Management Group

Le Group Master / The Master Group

6/29/2020

This Page intentionally left blank

## Table of Contents

<b>Introduction.....</b>	<b>1</b>
Conversion Summery .....	1
Wall Mount .....	1
Ducted & Cassette .....	1
<b>Parts Required .....</b>	<b>2</b>
Parts Required Table .....	2,3
<b>Installation.....</b>	<b>4</b>
Wall Mount .....	4
Ducted & Cassette .....	5
<b>App .....</b>	<b>5</b>
NetHome Plus .....	5-10

## Introduction

The integration of Wi-Fi permits control of the air conditioner via an Android or iOS app and internet connection through a cloud based server. The wall mount evaporators are not factory equipped to accept the Wi-Fi Kit, as such a component change is required to permit adaptation to Wi-Fi. Each WiFi kit includes 3 QR code stickers coded to the information of the Wi-Fi dongle. The QR code is to be place in a inconspicuous yet easy to scan location on the air conditioner to permit scanning by the customer.

## Conversion Summery

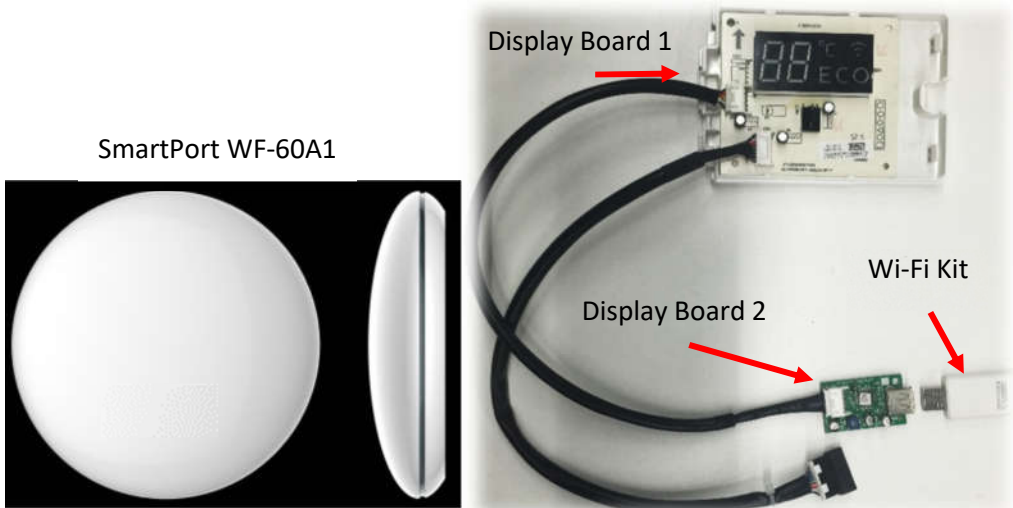
**Wall Mount** - The conversion of wall mount units requires changing the display (Display Board 1) and installation of the Wi-Fi kit. The addition of a connection port (Display Board 2) for some models is required. Once a wall mount unit has been converted to Wi-Fi it can no longer be connected to a wired wall control. The wall mount units will continue to function with the wireless remote controls.

**Ducted & Cassette** - The ducted and cassette units come from factory ready to accept connection of the SmartPort which is used to accept connection of the Wi-Fi Kit. These units require connection of the Wi-Fi SmartPort WF-60A1 and the Wi-Fi Kit. The SmartPort permits connection of both Wi-Fi and wired wall control.

Note: Wi-Fi is not currently available for the Console unit. 2020-07-02

Parts Required (table continued on page 3 you must both pages 2&3)

MOOVAIR	Parts Required to Convert unit to Wi-Fi			
Series	Model Number	Display Board 1	Display Board 2	SmartPort
M19 - Wall Mount	DM09HIW19115S1	17222000A07041	Not Required	Not Required
These models come from the factory with the connections necessary to plug in a wired controller.	DM12HIW19115S1	17222000A07041		
	DM18HIW19230S1	17222000A07108		
	DM24HIW19230S1	17222000A07066		
	DM30HIW19230S1			
	DM36HIW19230S1			
M23 & M25 Wall Mount	DM09HIW23230E3	17222000A54047	17222000A01170	Not Required
These models come from the factory with the connection necessary to plug in a wired controller.	DM12HIW23230E3			
	DM18HIW23230E3	17222000A54048		
	DM24HIW23230E3			
M23 & M25 Ducted	DM09HIDU230X5	Not Required	Not Required	Wi-Fi SmartPort WF-60A1
These models come from the factory with connection ports for both wired controller and Wi-Fi	DM12HIDU230X5			
	DM18HIDU230X5			
	DM24HIDU230X5			
	DM36HIDU230X5			
	DM48HIDU230X5			
	DM60HIDU230X5			
M23 & M25 Cassette	DM09HICU230X5	Not Required	Not Required	Wi-Fi SmartPort WF-60A1
These models come from the factory with connection ports for both wired controller and Wi-Fi	DM12HICU230X5			
	DM18HICU230X5			
	DM24HICU230X5			
	DM36HICU230X5			
	DM48HICU230X5			

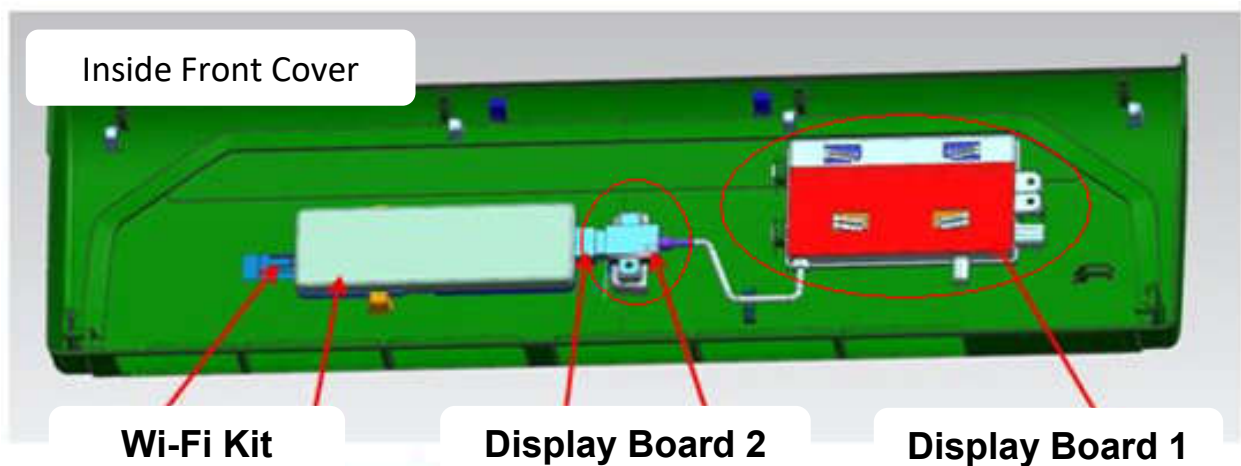
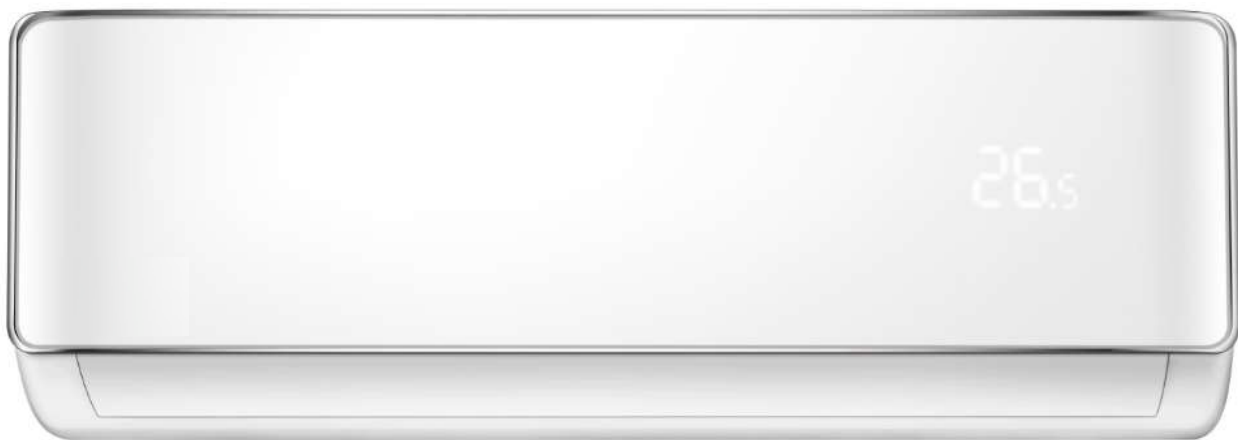
Wi-Fi Kit	Note
17310900A02901	To convert these models to Wi-Fi it is necessary to change the display board. The new display board has the connection port for the Wi-Fi Kit. The new display board does not have a connection port for a wired control. The unit will continue to function with the wireless remote.
17310900A02901	To convert these models to Wi-Fi it is necessary to change the display board and add the Wi-Fi connection board (Display Board 2). The new display board does not have a connection port for a wired control. The unit will continue to function with the wireless remote.
See SmartPort	 <p>SmartPort WF-60A1</p> <p>Display Board 1</p> <p>Display Board 2</p> <p>Wi-Fi Kit</p>
See SmartPort	

# Installation

## Wall Mount

1. Turn the power off
2. Open the front cover of the wall mount unit
3. Remove the existing display
4. Install then new parts, display board 1, display board 2 and Wi-Fi Kit, make necessary wiring connections.
5. Close front cover

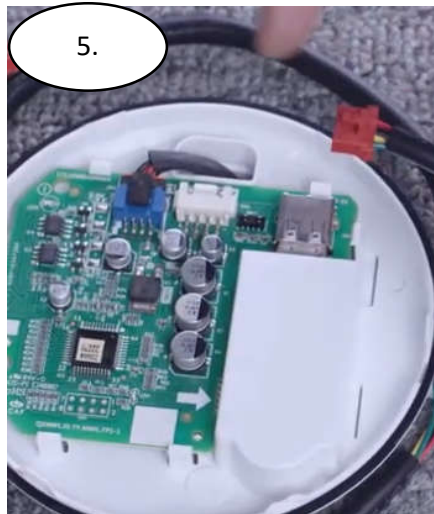
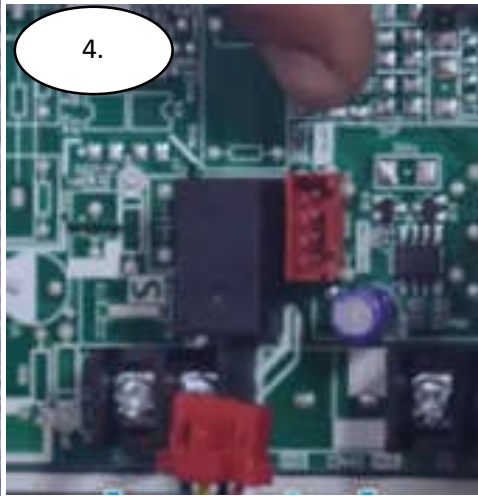
Youtube Video link      <https://www.youtube.com/watch?v=scX-uOiLVPA>



## Ducted & Cassette

1. Turn power off
2. Open the back cover of the SmartPort
3. Insert the Wi-Fi Kit
4. Connect wiring to the ducted or cassette PCB CN40 connection
5. If desired remove front of SmartPort and connect wired control
6. Mount back cover in applicable location and install SmartPort

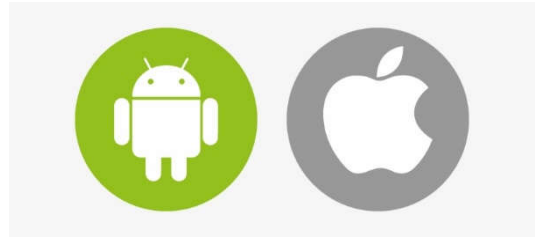
Youtube Video link <https://www.youtube.com/watch?v=quidW-KRjfA>



## App (NetHome Plus)

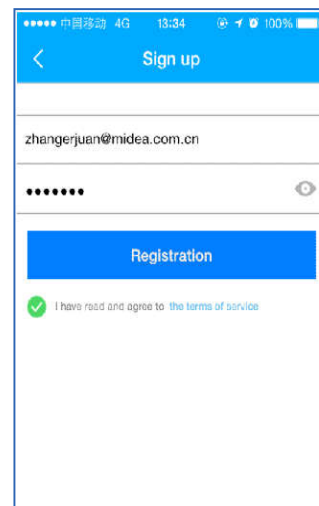
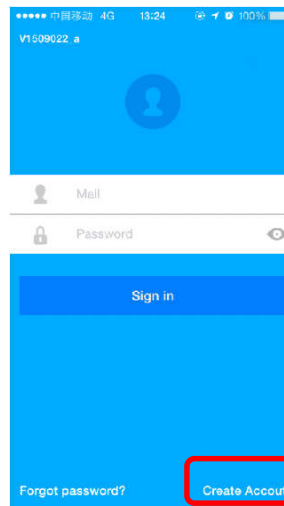
### System Requirements

- Operation system: Android > 3.1 or iOS > 6.1
- Device storage space: at least 20MB.
- Moovair AC with Wi-Fi Kit
- QR code from the Wi-Fi Kit, module which can identify the unit to build the connection between AC and Router
- Wireless router and internet connection



### NetHome Plus

- Download the App “NETHOME PLUS” for the applicable iOS or Android
- Open the App, click “**Create Account**” to register





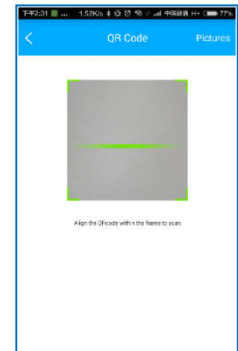
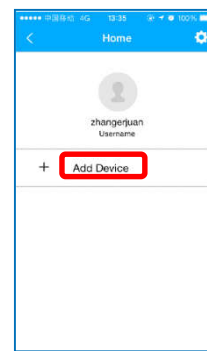
## Router Address Setting

- Leave the unit off
- Using the wireless remote control press the [LED] button no less than 7 times consecutively within 3 minutes or until “AP” appears on the display panel.



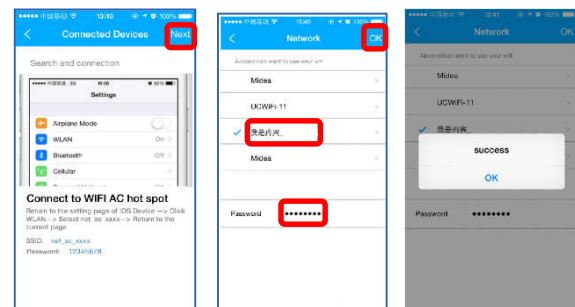
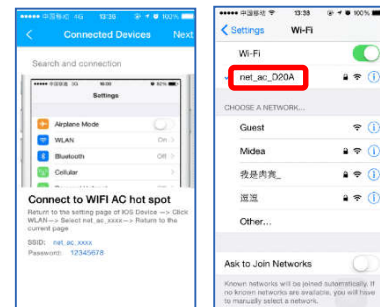
## Create connection between AC and Wireless Router using the App

- Input username and password, click “Sign in”, enter the app interface, click “Add Device”, then Scan QR Code of the Wi-Fi module



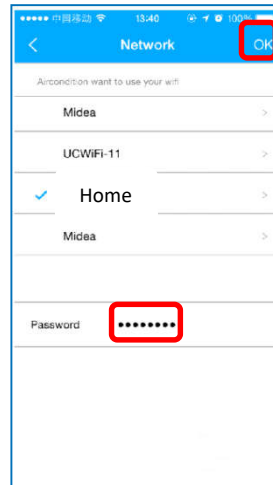
## iOS devices

- Once the App has finished installing it will remind the user to return to the setting page to connect to the Wi-Fi
- Choose the related Wi-Fi named with “net\_ac\_xxxx” and enter password : 12345678, then return to APP, click “Next”
- Select router, enter password, press “OK” done.



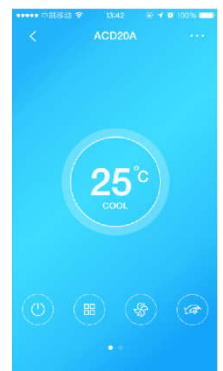
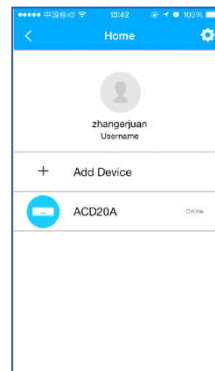
## Android devices

- App will enter the network directly, choose the router, enter password, press “OK”, done

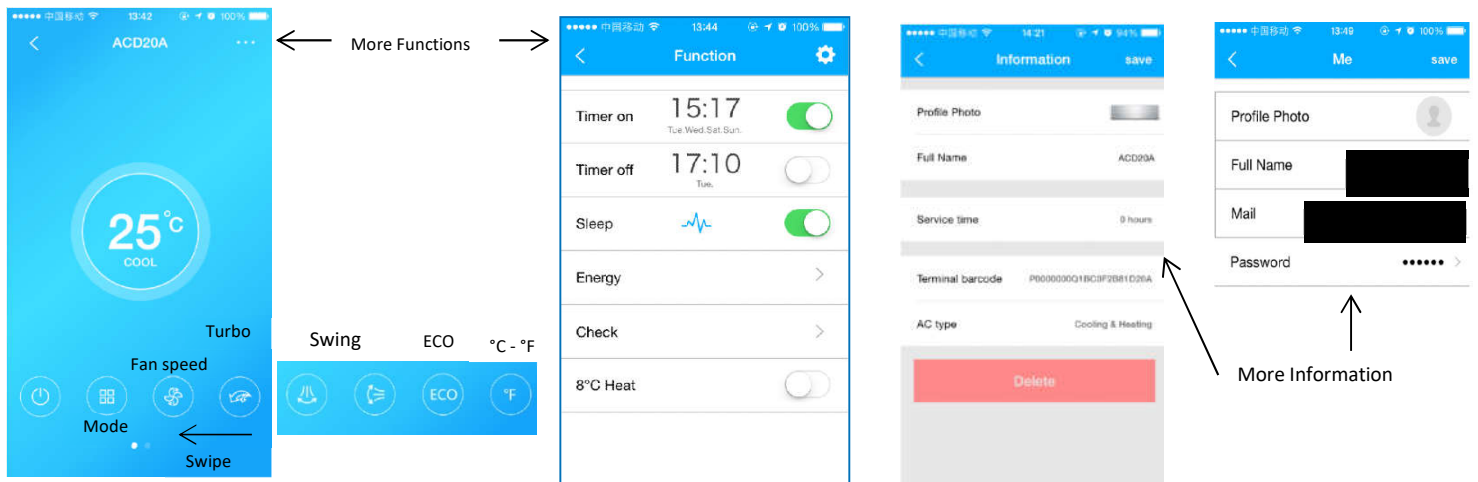


## App operation

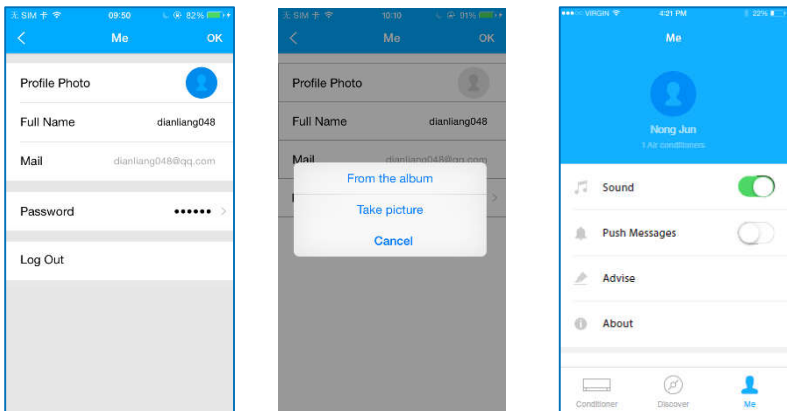
- Open the App, click on the unit to control
- Press “Touch to Turn On”
- AC Unit is now available for control



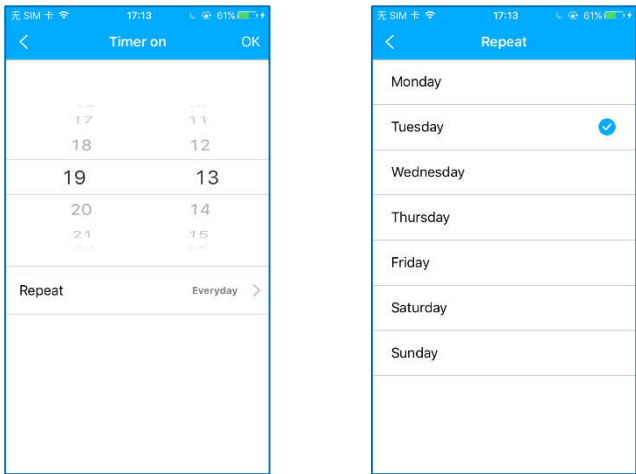
## App Interaction



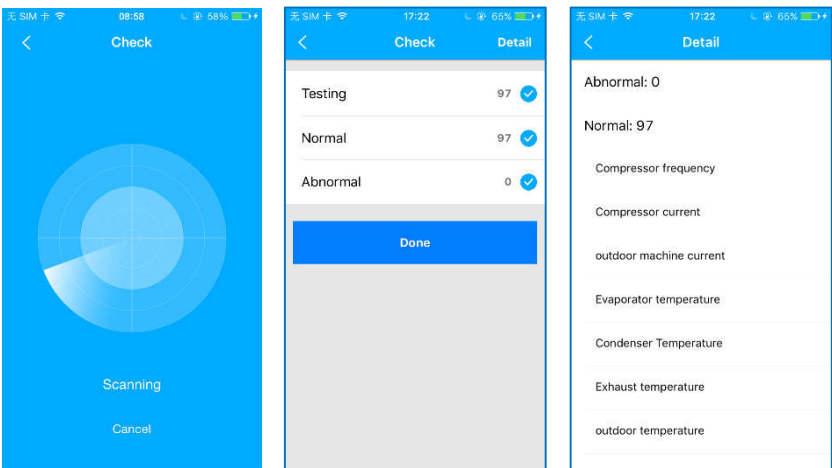
Edit Profile



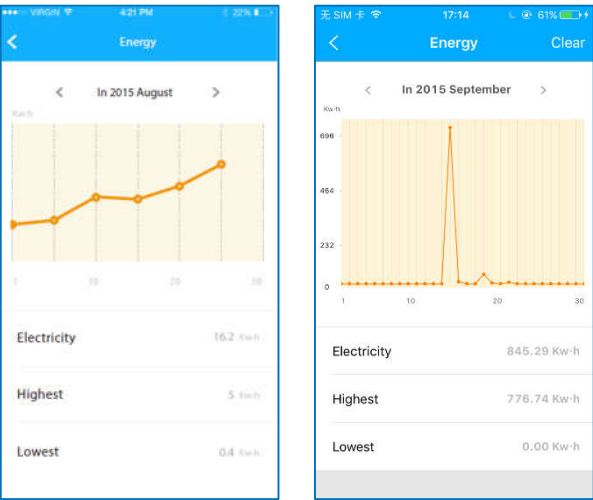
Weekly Timer Functions



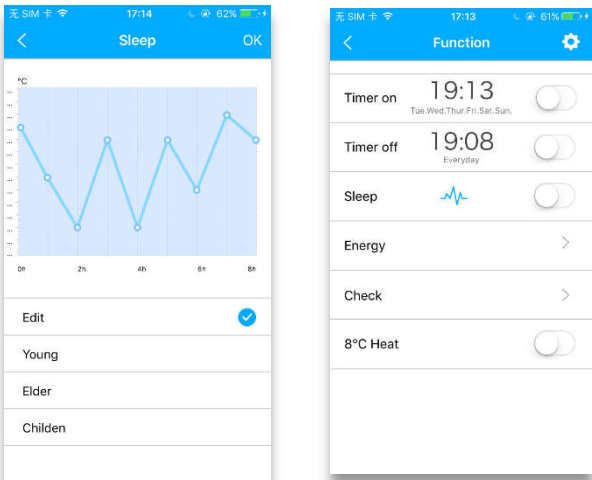
Check Functions



Power Management (85% Accurate)



Sleeping Curve - Summary



**Technical Support from the Product Management Support Group  
Contacts:**

- Sylvain Dumont – Extension 15072
- Patrick Guy – Extension 15207
- Erik Rasmussen – Extension 40069



# Master